

# Phase 3 Food Package Changes – June Guidance

MAY 7, 2026

## Default food packages

Starting June 1, the “old” default food items will be expired and removed from the default food packages, which will result in **the default food packages working correctly for the new substitution items, juice and eggs**. You will no longer have to make corrections to the default food packages.

“NEW” will continue to display in front of the phase 3 food items until the end of June.

## Issuing late for May in June

In June, when issuing late for May, only phase 3 new food items will be issued. These are benefits with a:

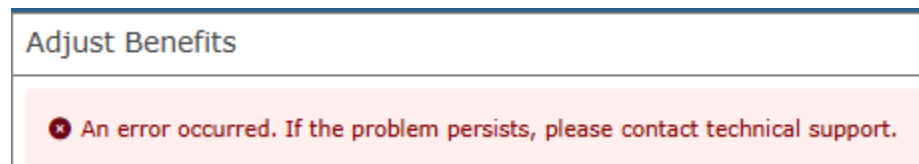
- Printed First Date to Use (PFDTU) = May
- First Date to Use (FDTU) or Issued Date = June

## Adjusting benefits

### Adjusting May benefits issued before June 1 in June

#### Women and children

Food packages issued for May before June 1 (not late) **cannot be adjusted for women and children** because all of the food items are expired. When attempting to open Adjust Benefits in the participant folder of a woman or child, the following error will display:



#### Guidance for women and children May benefits

Make sure all May food packages have been adjusted if incorrect quantities were originally issued before June 1. **There will be no adjustment to these food items as of June 1.**

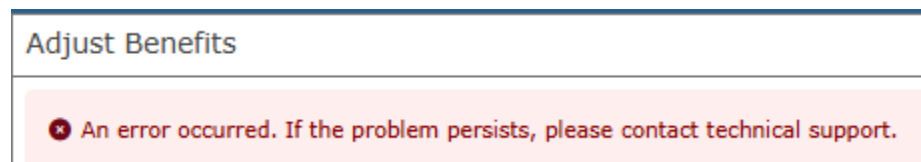
You can use the FOOD & FORMULA BY PFDTU Infoview report in the INFOVIEW TEMPLATES >> Food and Formula folder to ensure May quantities are correct:

- Whole grains (ensure quantity is not 1 or 2) = food item 58.

- CVB for non-breastfeeding, some-breastfeeding, and pregnant women (\$48 instead of \$47) = food item 106.

### Food package III women and children

**You will NOT be able to adjust medical formula issued for May as of June 1 for food package III participants.** When attempting to open Adjust Benefits, the following error will display:



If a medical formula needs to be added or adjusted, you must contact the Help Desk (1-800-488-8799, press 2,2) for assistance with updating the medical formula on the system back-end.

**Important!** If you are waiting for a medical prescription for May benefits and do not think you will receive it before the end of May, **do NOT issue any benefits to that participant for May** until you receive the prescription. **(You can issue to other family members.)**

It's better to issue late benefits for May in June than to issue incorrect May benefits in May since you will not be able to adjust them without assistance from the Help Desk.

### Infants

For infants changing breastfeeding status or requiring different formula who were issued May benefits before June 1, you can **adjust the formula only**. Do **not** void benefits (even if redemption has not occurred) and do not adjust any other food items!

## Adjusting May benefits issued on or after June 1 in June

You will be able to adjust all May benefits issued on or after June 1 since the new food items will have been issued.

*Minnesota Department of Health - WIC Program, 625 Robert St N, PO BOX 64975, ST PAUL MN 55164-0975; 1-800-657-3942, [health.wic@state.mn.us](mailto:health.wic@state.mn.us), [www.health.state.mn.us](http://www.health.state.mn.us); to obtain this information in a different format, call: 1-800-657-3942.*

*This institution is an equal opportunity provider.*