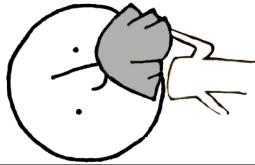
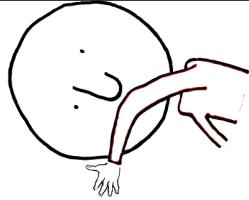


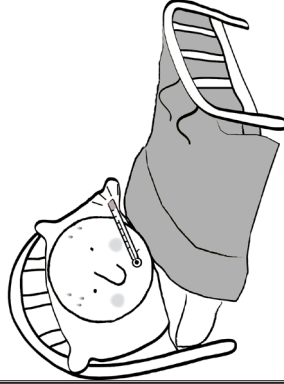
Combata la gripe



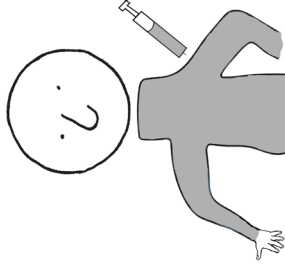
iTápese al toser!



Lávase las manos.

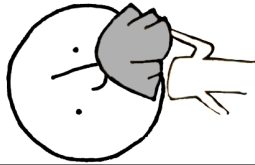


Quédese en su casa si está enfermo.

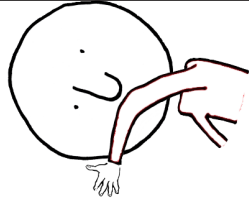


Vacúnese.

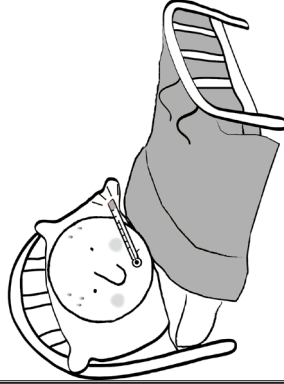
Combata la gripe



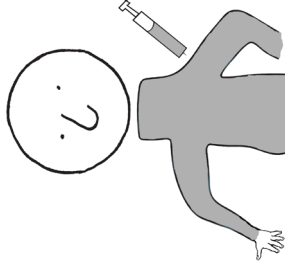
iTápese al toser!



Lávase las manos.

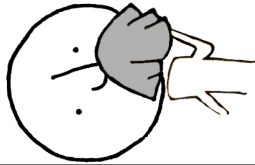


Quédese en su casa si está enfermo.

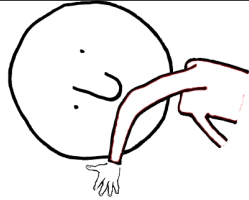


Vacúnese.

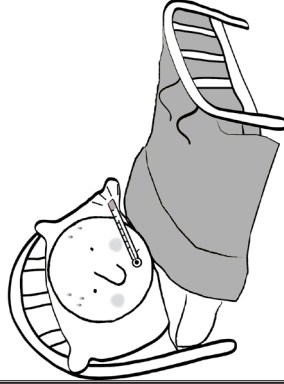
Combata la gripe



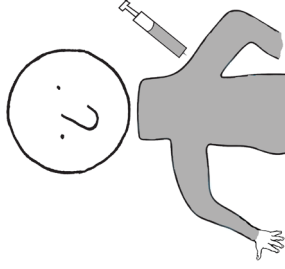
iTápese al toser!



Lávase las manos.

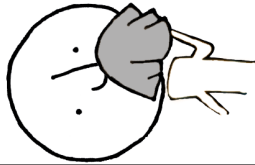


Quédese en su casa si está enfermo.

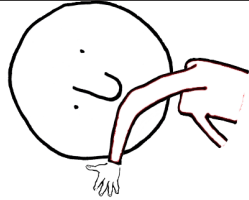


Vacúnese.

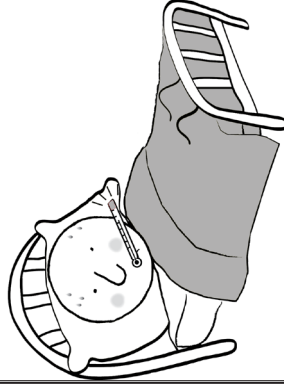
Combata la gripe



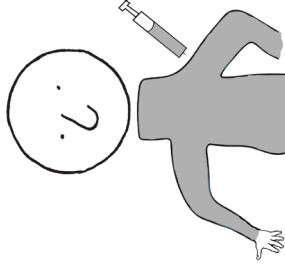
iTápese al toser!



Lávase las manos.



Quédese en su casa si está enfermo.



Vacúnese.

FIGHT the FLU

Combata la gripe

Questions about flu?

Minnesota Department
of Health

www.mdhflu.com

Centers for Disease Control

www.cdc.gov

1-800-CDC-INFO
(800-232-4636)

TTY: 1-888-232-6348

24 hours/every day

Your city or county public
health department

FIGHT the FLU

Combata la gripe

Questions about flu?

Minnesota Department
of Health

www.mdhflu.com

Centers for Disease Control

www.cdc.gov

1-800-CDC-INFO
(800-232-4636)

TTY: 1-888-232-6348

24 hours/every day

Your city or county public
health department

FIGHT the FLU

Combata la gripe

Questions about flu?

Minnesota Department
of Health

www.mdhflu.com

Centers for Disease Control

www.cdc.gov

1-800-CDC-INFO
(800-232-4636)

TTY: 1-888-232-6348

24 hours/every day

Your city or county public
health department

FIGHT the FLU

Combata la gripe

Questions about flu?

Minnesota Department
of Health

www.mdhflu.com

Centers for Disease Control

www.cdc.gov

1-800-CDC-INFO
(800-232-4636)

TTY: 1-888-232-6348

24 hours/every day

Your city or county public
health department