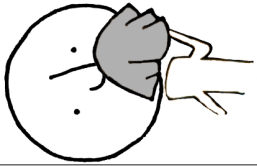
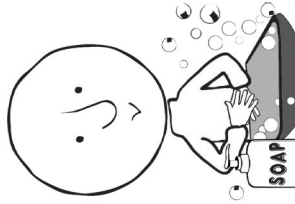
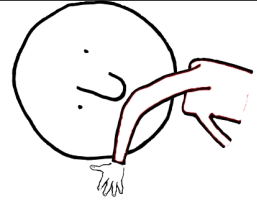


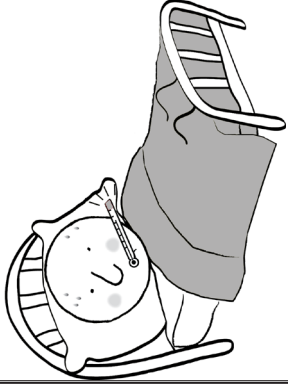
La Dagaallanka Hargabka



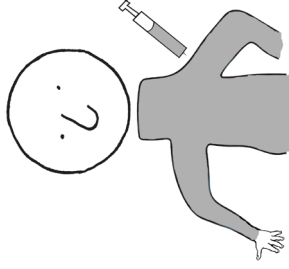
Qufacaaga dabool!



Gacmahaaga dhaq.

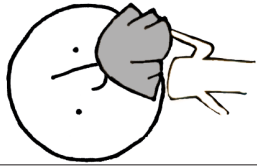


Guriga joog markaad jirran tahay.

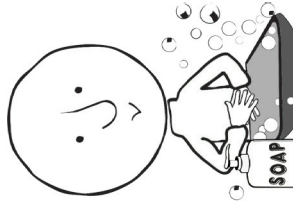
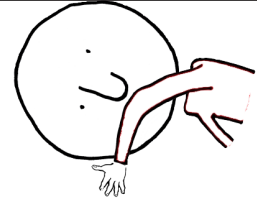


Ha lagu tallaalo.

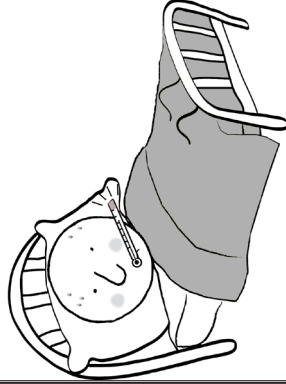
La Dagaallanka Hargabka



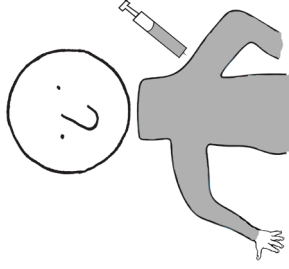
Qufacaaga dabool!



Gacmahaaga dhaq.

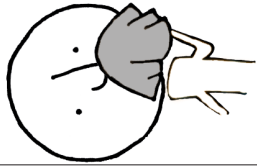


Guriga joog markaad jirran tahay.

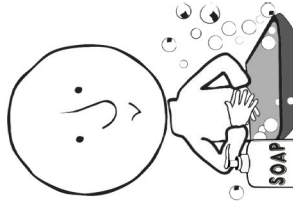
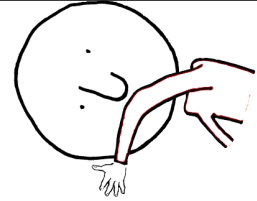


Ha lagu tallaalo.

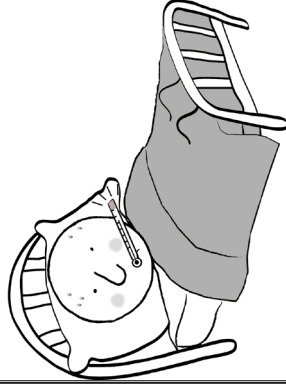
La Dagaallanka Hargabka



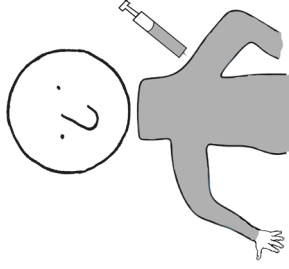
Qufacaaga dabool!



Gacmahaaga dhaq.

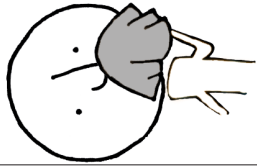


Guriga joog markaad jirran tahay.

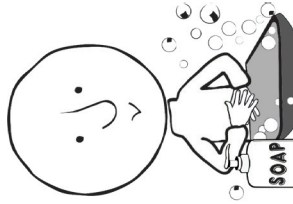
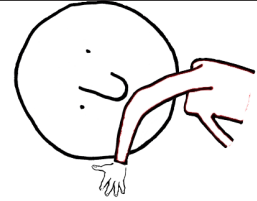


Ha lagu tallaalo.

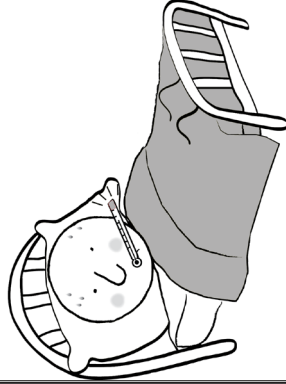
La Dagaallanka Hargabka



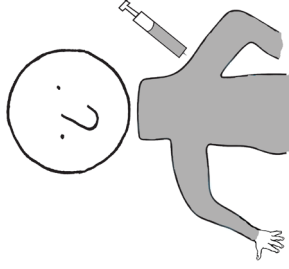
Qufacaaga dabool!



Gacmahaaga dhaq.



Guriga joog markaad jirran tahay.



Ha lagu tallaalo.

FIGHT the FLU

La Dagaallanka Hargabka

Questions about flu?

Minnesota Department
of Health

www.mdhflu.com

Centers for Disease Control

www.cdc.gov

1-800-CDC-INFO
(800-232-4636)

TTY: 1-888-232-6348

24 hours/every day

Your city or county public
health department

FIGHT the FLU

La Dagaallanka Hargabka

Questions about flu?

Minnesota Department
of Health

www.mdhflu.com

Centers for Disease Control

www.cdc.gov

1-800-CDC-INFO
(800-232-4636)

TTY: 1-888-232-6348

24 hours/every day

Your city or county public
health department

FIGHT the FLU

La Dagaallanka Hargabka

Questions about flu?

Minnesota Department
of Health

www.mdhflu.com

Centers for Disease Control

www.cdc.gov

1-800-CDC-INFO
(800-232-4636)

TTY: 1-888-232-6348

24 hours/every day

Your city or county public
health department

FIGHT the FLU

La Dagaallanka Hargabka

Questions about flu?

Minnesota Department
of Health

www.mdhflu.com

Centers for Disease Control

www.cdc.gov

1-800-CDC-INFO
(800-232-4636)

TTY: 1-888-232-6348

24 hours/every day

Your city or county public
health department