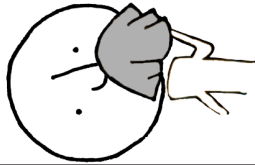
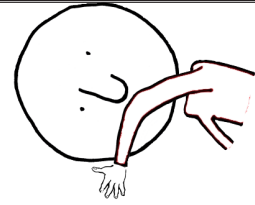


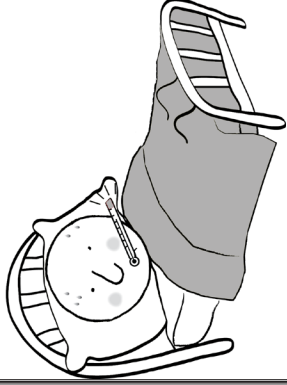
Tiv thairv Khaub Thuas



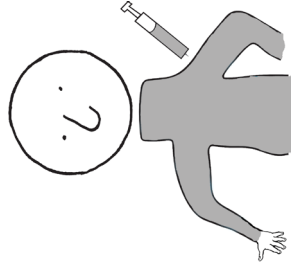
Npog koj thaum  
koj hnoos.



Ntxuav koj ob  
txhais tes.

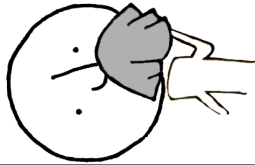


Nyob twj ywm tom tsev  
thaum muaj mob.

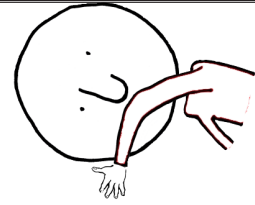


Mus xav tshuaj  
tiv thairv.

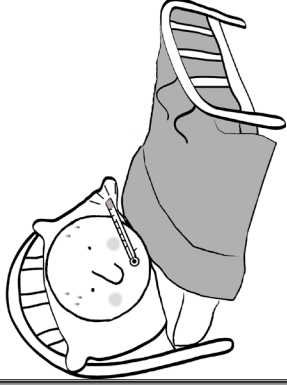
Tiv thairv Khaub Thuas



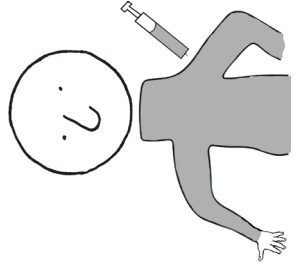
Npog koj thaum  
koj hnoos.



Ntxuav koj ob  
txhais tes.

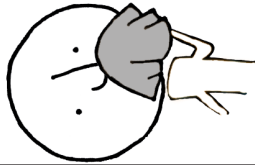


Nyob twj ywm tom tsev  
thaum muaj mob.

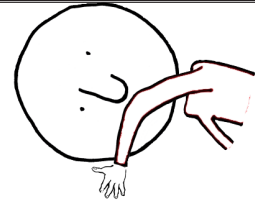


Mus xav tshuaj  
tiv thairv.

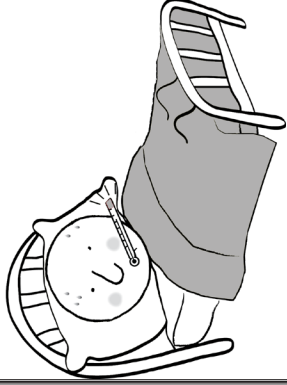
Tiv thairv Khaub Thuas



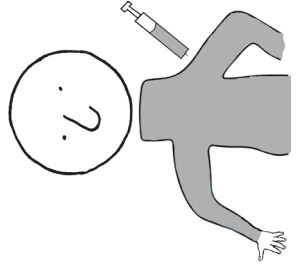
Npog koj thaum  
koj hnoos.



Ntxuav koj ob  
txhais tes.

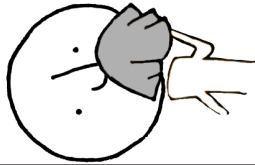


Nyob twj ywm tom tsev  
thaum muaj mob.

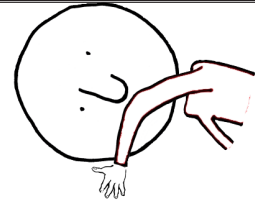


Mus xav tshuaj  
tiv thairv.

Tiv thairv Khaub Thuas



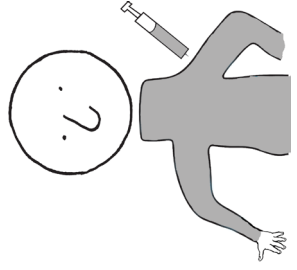
Npog koj thaum  
koj hnoos.



Ntxuav koj ob  
txhais tes.



Nyob twj ywm tom tsev  
thaum muaj mob.



Mus xav tshuaj  
tiv thairv.

# FIGHT the FLU

Tiv thaiv Khaub Thuas

Questions about flu?

Minnesota Department  
of Health

[www.mdhflu.com](http://www.mdhflu.com)

Centers for Disease Control

[www.cdc.gov](http://www.cdc.gov)

1-800-CDC-INFO  
(800-232-4636)

TTY: 1-888-232-6348

24 hours/every day

Your city or county public  
health department

# FIGHT the FLU

Tiv thaiv Khaub Thuas

Questions about flu?

Minnesota Department  
of Health

[www.mdhflu.com](http://www.mdhflu.com)

Centers for Disease Control

[www.cdc.gov](http://www.cdc.gov)

1-800-CDC-INFO  
(800-232-4636)

TTY: 1-888-232-6348

24 hours/every day

Your city or county public  
health department

# FIGHT the FLU

Tiv thaiv Khaub Thuas

Questions about flu?

Minnesota Department  
of Health

[www.mdhflu.com](http://www.mdhflu.com)

Centers for Disease Control

[www.cdc.gov](http://www.cdc.gov)

1-800-CDC-INFO  
(800-232-4636)

TTY: 1-888-232-6348

24 hours/every day

Your city or county public  
health department

# FIGHT the FLU

Tiv thaiv Khaub Thuas

Questions about flu?

Minnesota Department  
of Health

[www.mdhflu.com](http://www.mdhflu.com)

Centers for Disease Control

[www.cdc.gov](http://www.cdc.gov)

1-800-CDC-INFO  
(800-232-4636)

TTY: 1-888-232-6348

24 hours/every day

Your city or county public  
health department