

# Health Care Spending, Prices, and Utilization in Minnesota: 2019 to 2023

## SUPPLEMENT

SEPTEMBER 2025



The exhibits in this Supplement present estimates of health care spending from 2019 through 2023 among Minnesotans, ages 64 and younger, who have commercial health insurance through an employer or purchase health insurance on their own, including through Minnesota's health insurance exchange, MNsure.

These estimates rely upon data from the Minnesota All Payer Claims Database (MN APCD), a state repository of de-identified health care enrollment and claims data administered by the Minnesota Department of Health.<sup>1,2</sup>

### Exhibit S-1: Cumulative Percentage Change in Health Care Spending, Prices, and Utilization, 2019 to 2023

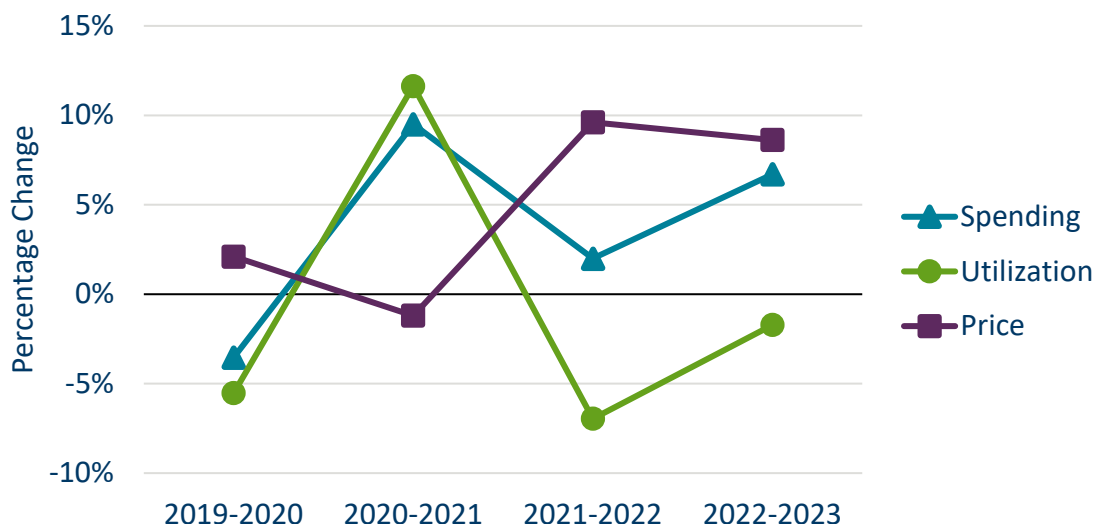
Exhibit S-1 contains the data displayed in Figure 1 in the brief.

Year	Spending	Prices	Utilization
2019	N/A	N/A	N/A
2020	-3.5%	2.1%	-5.5%
2021	5.6%	1.0%	5.5%
2022	7.7%	10.3%	-1.7%
2023	15.0%	20.0%	-3.4%

Source: Health Economics Program analysis of data from the Minnesota All Payer Claims Database, Extract 27.

### Exhibit S-2: Year-Over-Year Percentage Change in Health Care Spending, Prices, and Utilization, 2019 to 2023

Exhibit S-2 provides an alternative view of the data shown in Figure 1 and Exhibit S-1, displaying year-over-year percentage change. This view illustrates the relationship between changes in utilization and prices and the corresponding changes in spending.



Source: Health Economics Program analysis of data from the Minnesota All Payer Claims Database, Extract 27.

### Exhibit S-3: Year-Over-Year Percentage Change in Health Care Spending, Prices, and Utilization, 2019 to 2023

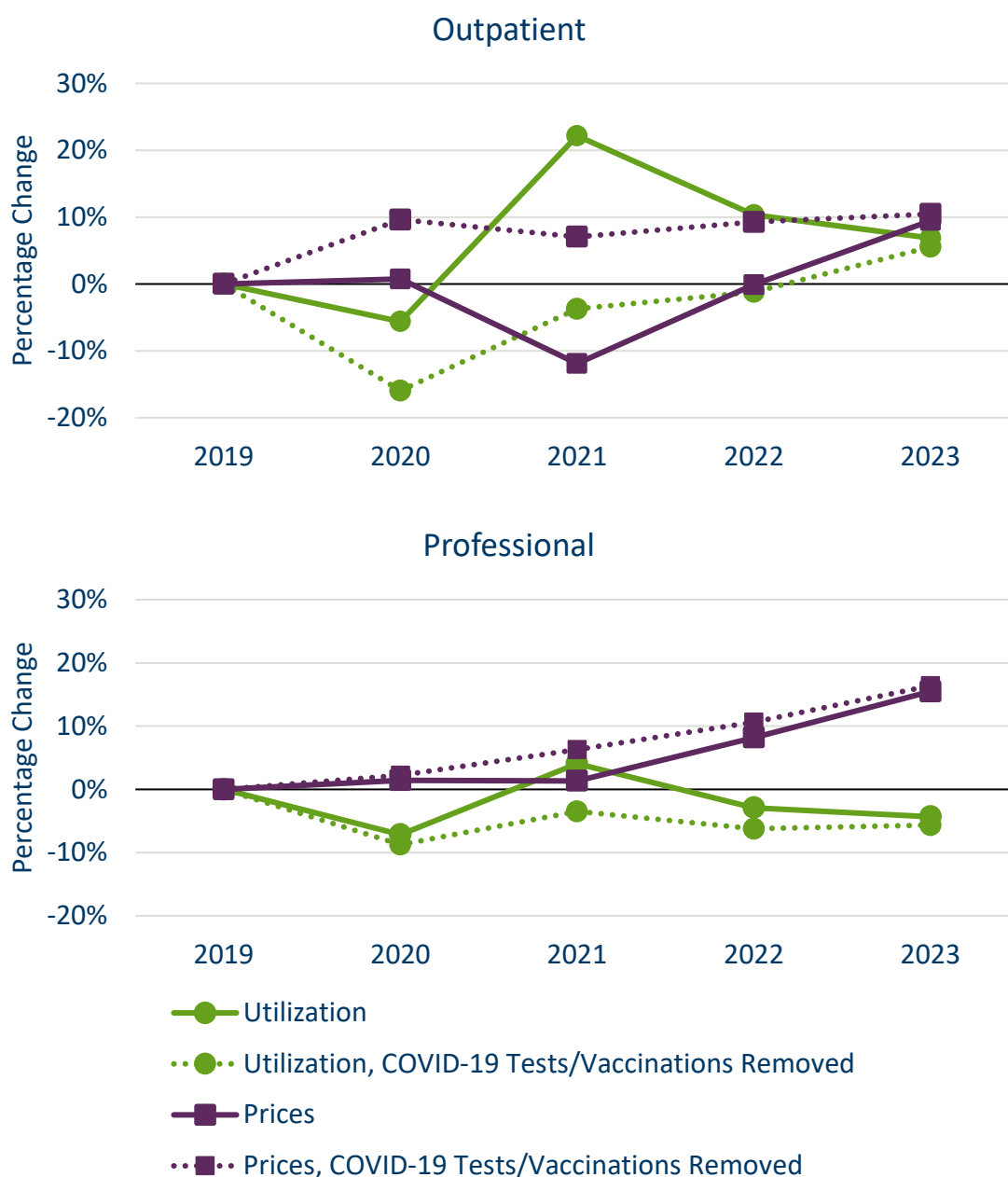
Exhibit S-3 contains the data displayed in Exhibit S-2.

Year	Spending	Prices	Utilization
2019-2020	-3.5%	2.1%	-5.5%
2020-2021	9.5%	-1.2%	11.6%
2021-2022	2.0%	9.6%	-7.0%
2022-2023	6.7%	8.6%	-1.7%

Source: Health Economics Program analysis of data from the Minnesota All Payer Claims Database, Extract 27.

### Exhibit S-4: Cumulative Percentage Change in Outpatient and Professional Prices and Utilization, With and Without Codes for COVID-19 Testing and Vaccination, 2019 to 2023

Exhibit S-4 displays the cumulative percentage change in prices and utilization for the outpatient and professional categories (the solid lines). Additionally, it displays the cumulative percentage change in prices and utilization in these categories if COVID-19 tests and vaccines are excluded (the dashed lines).



Source: Health Economics Program analysis of data from the Minnesota All Payer Claims Database, Extract 27.

**Exhibit S-5: Cumulative Percentage Change in Outpatient and Professional Spending Prices and Utilization, With and Without Codes for COVID-19 Testing and Vaccination, 2019 to 2023**

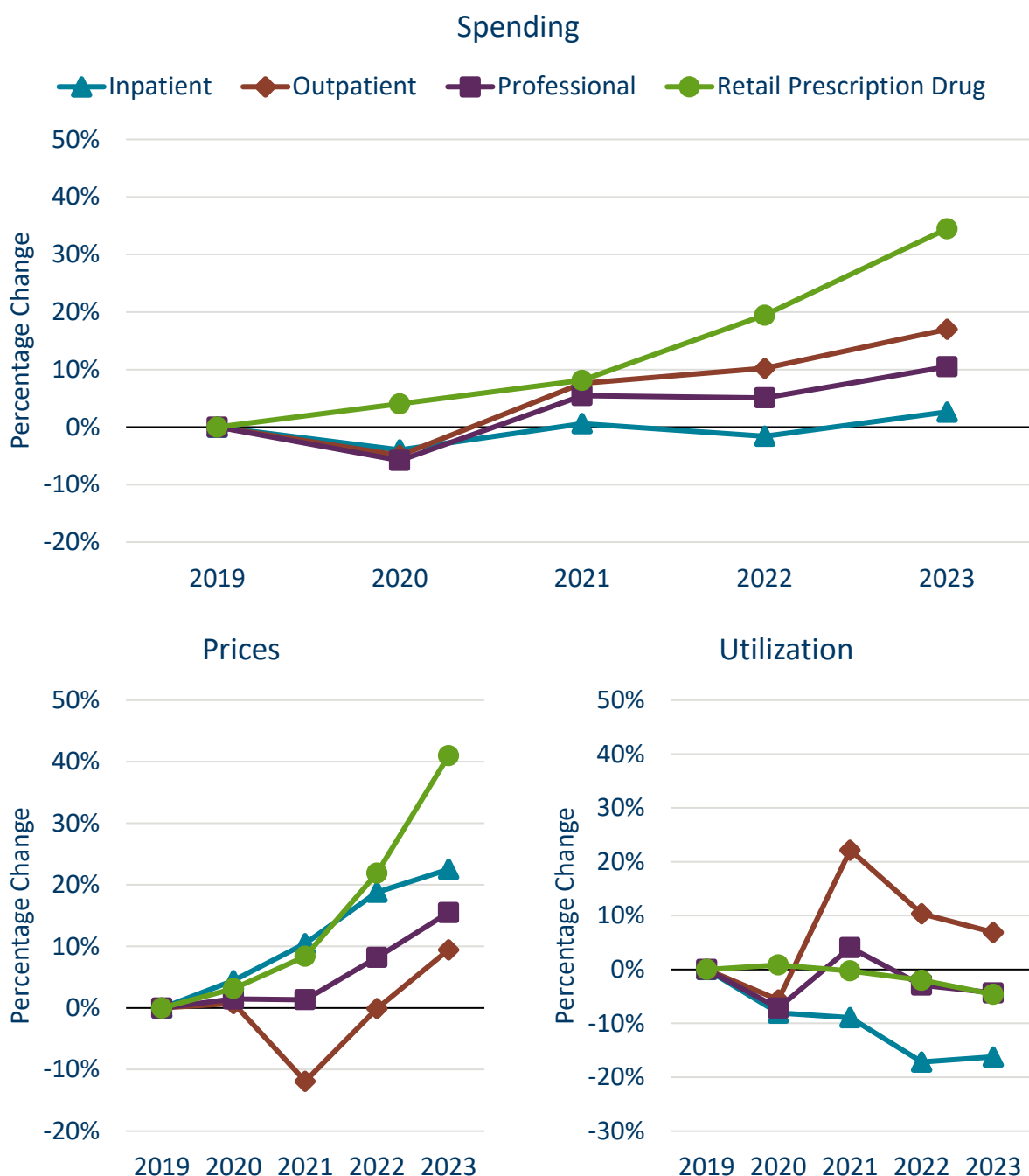
Exhibit S-5 contains the data displayed in Exhibit S-4.

Category	2019	2020	2021	2022	2023
Utilization, Outpatient	N/A	-5.6%	22.2%	10.3%	6.9%
Utilization, Outpatient, COVID-19 Tests/Vaccinations Removed	N/A	-16.0%	-3.7%	-1.2%	5.5%
Utilization, Professional	N/A	-7.2%	4.1%	-2.9%	-4.3%
Utilization, Professional, COVID-19 Tests/Vaccinations Removed	N/A	-8.7%	-3.5%	-6.2%	-5.7%
Price, Outpatient	N/A	0.7%	-11.9%	-0.1%	9.5%
Price, Outpatient, COVID-19 Tests/Vaccinations Removed	N/A	9.6%	7.1%	9.3%	10.5%
Price, Professional	N/A	1.5%	1.3%	8.2%	15.5%
Price, Professional, COVID-19 Tests/Vaccinations Removed	N/A	2.2%	6.3%	10.6%	16.4%

Source: Health Economics Program analysis of data from the Minnesota All Payer Claims Database, Extract 27.

## Exhibit S-6: Cumulative Percentage Change in Health Care Spending, Prices, and Utilization by Service Category<sup>3</sup>, 2019 to 2023

Exhibit S-6 displays the cumulative percentage change in spending, prices, and utilization, split into the four service categories used in this analysis: Inpatient, Outpatient, Professional, and Retail Prescription Drug.



Source: Health Economics Program analysis of data from the Minnesota All Payer Claims Database, Extract 27.

HEALTH CARE SPENDING, PRICES, AND UTILIZATION IN MINNESOTA:  
2019 TO 2023

**Exhibit S-7: Cumulative Percentage Change in Health Care Spending, Prices, and Utilization by Service Category, 2019 to 2023**

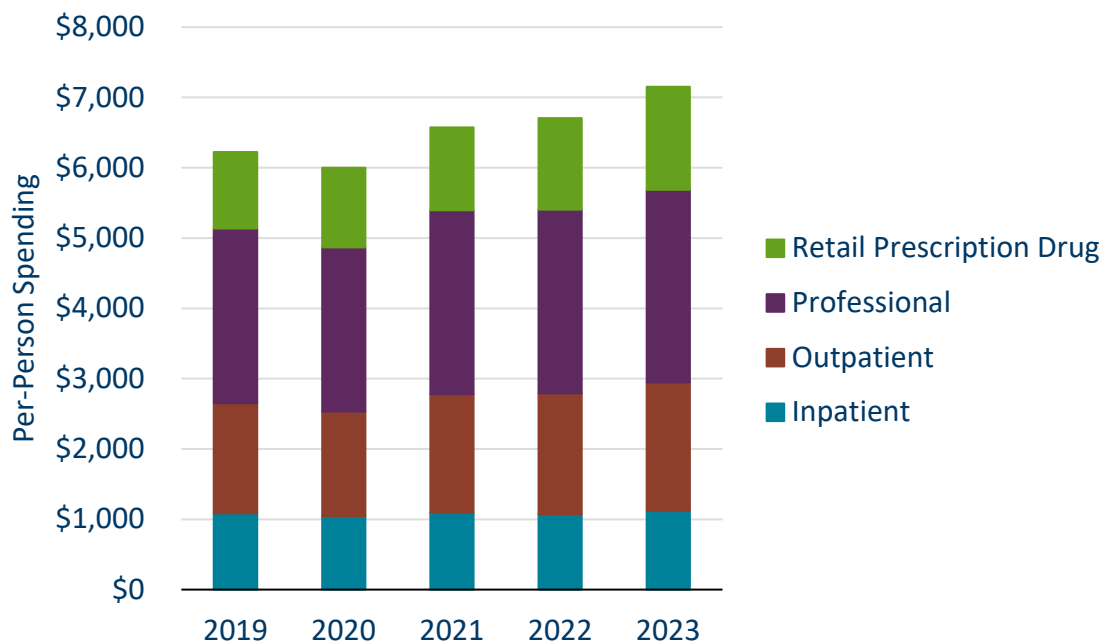
Exhibit S-7 contains the data displayed in Exhibit S-6.

Category	2019	2020	2021	2022	2023
Spending, Inpatient	N/A	-4.0%	0.6%	-1.6%	2.6%
Spending, Outpatient	N/A	-4.9%	7.6%	10.2%	17.0%
Spending, Professional	N/A	-5.8%	5.5%	5.1%	10.5%
Spending, Retail Prescription Drug	N/A	4.0%	8.1%	19.5%	34.5%
Prices, Inpatient	N/A	4.5%	10.5%	18.8%	22.5%
Prices, Outpatient	N/A	0.7%	-11.9%	-0.1%	9.5%
Prices, Professional	N/A	1.5%	1.3%	8.2%	15.5%
Prices, Retail Prescription Drug	N/A	3.2%	8.4%	21.9%	41.0%
Utilization, Inpatient	N/A	-8.1%	-8.9%	-17.2%	-16.2%
Utilization, Outpatient	N/A	-5.6%	22.2%	10.4%	6.9%
Utilization, Professional	N/A	-7.2%	4.1%	-2.9%	-4.3%
Utilization, Retail Prescription Drug	N/A	0.8%	-0.3%	-2.0%	-4.6%

Source: Health Economics Program analysis of data from the Minnesota All Payer Claims Database, Extract 27.

### Exhibit S-8: Components of Per-Person Spending by Service Category, 2019 to 2023

Exhibit S-8 displays the data shown in Figure 2 of the brief, with the medical portion split into the three component categories: inpatient, outpatient, and professional.



Source: Health Economics Program analysis of data from the Minnesota All Payer Claims Database, Extract 27.

### Exhibit S-9: Components of Per-Person Spending by Service Category, 2019 to 2023

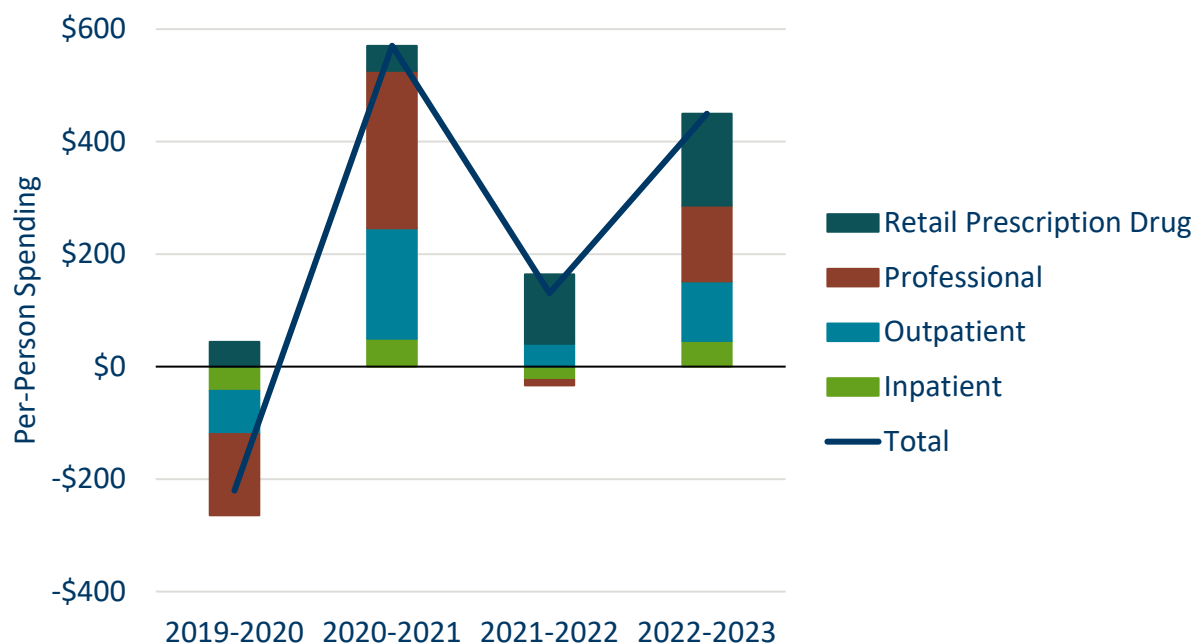
Exhibit S-9 contains the data displayed in Exhibit S-8 above.

Spending Category	2019	2020	2021	2022	2023
Total	\$6,224	\$6,003	\$6,574	\$6,704	\$7,154
Inpatient	\$1,087	\$1,044	\$1,094	\$1,070	\$1,116
Outpatient	\$1,564	\$1,487	\$1,683	\$1,723	\$1,829
Professional	\$2,483	\$2,339	\$2,619	\$2,609	\$2,744
Retail Prescription Drug	\$1,090	\$1,134	\$1,178	\$1,302	\$1,465

Source: Health Economics Program analysis of data from the Minnesota All Payer Claims Database, Extract 27.

### Exhibit S-10: Year-Over-Year Change in Per-Person Spending by Service Category, 2019 to 2023

Exhibit S-10 provides another look at the data shown in Exhibits S-8 and S-9 and Figure 2 in the brief. It displays the year-over-year change in spending for each of the four service categories.



Source: Health Economics Program analysis of data from the Minnesota All Payer Claims Database, Extract 27.

### Exhibit S-11: Year-Over-Year Change in Per-Person Spending by Service Category, 2019 to 2023

Exhibit S-11 contains the data displayed in Exhibit S-10.

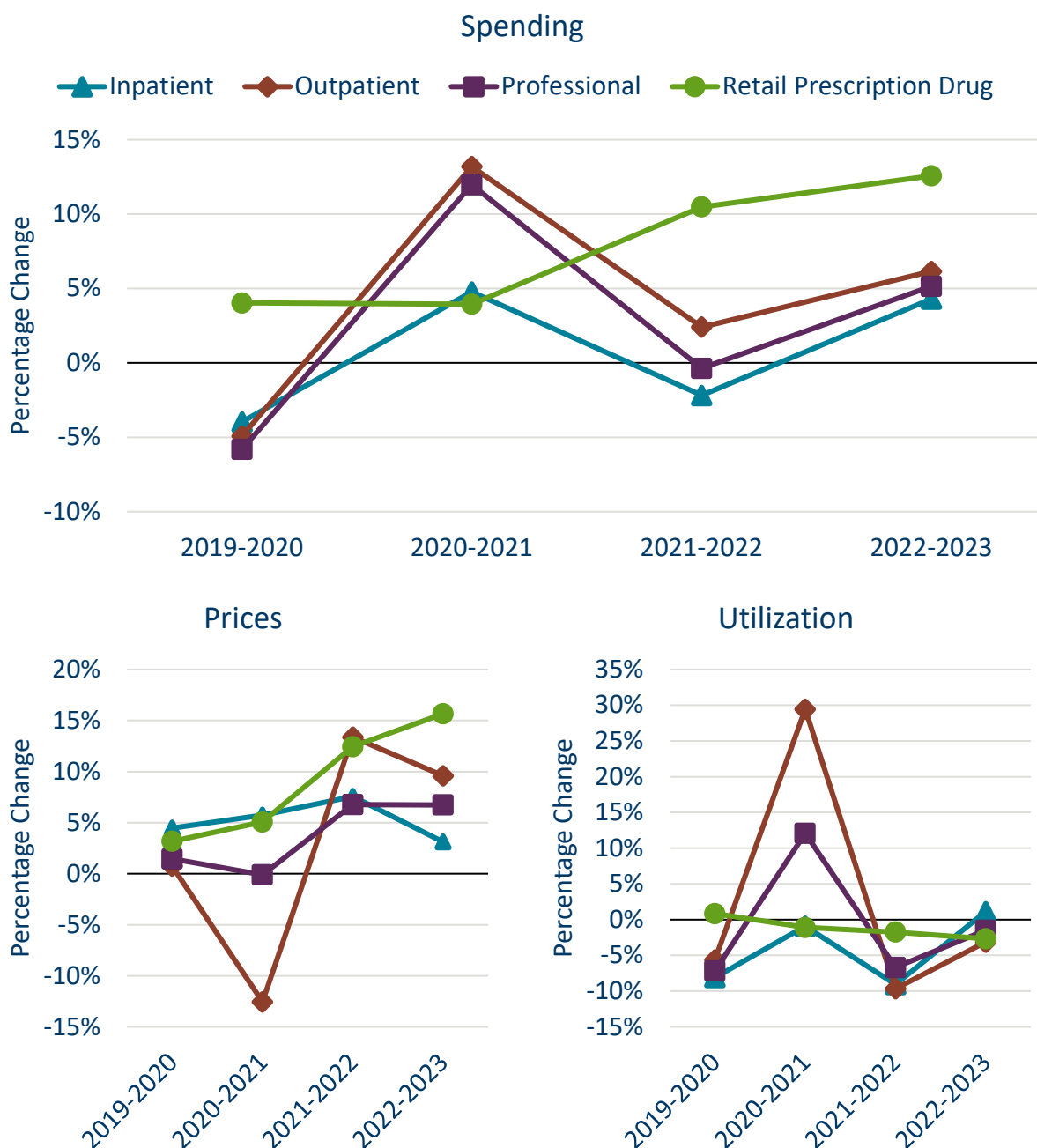
Service Category	2019-2020	2020-2021	2021-2022	2022-2023
Total	(\$220)	\$571	\$131	\$450
Inpatient	(\$43)	\$50	(\$24)	\$46
Outpatient	(\$77)	\$196	\$41	\$106
Professional	(\$144)	\$280	(\$10)	\$134
Retail Prescription Drug	\$44	\$45	\$123	\$164

Source: Health Economics Program analysis of data from the Minnesota All Payer Claims Database, Extract 27.



## Exhibit S-12: Year-Over-Year Percentage Change in Per-Person Spending, Prices, and Utilization by Service Category, 2019 to 2023

Exhibit S-12 displays the year-over-year percentage change in spending, prices, and utilization, split into the four service categories used in this analysis: Inpatient, Outpatient, Professional, and Retail Prescription Drug. In the spending chart, percentage growth is similar for outpatient/professional.



Source: Health Economics Program analysis of data from the Minnesota All Payer Claims Database, Extract 27.

HEALTH CARE SPENDING, PRICES, AND UTILIZATION IN MINNESOTA:  
2019 TO 2023

**Exhibit S-13: Year-Over-Year Change in Per-Person Spending, Prices, and  
Utilization by Service Category, 2019 to 2023**

Exhibit S-13 contains the data displayed in Exhibit S-12.

Category	2019-2020	2020-2021	2021-2022	2022-2023
Spending, Inpatient	-4.0%	4.8%	-2.2%	4.3%
Spending, Outpatient	-4.9%	13.2%	2.4%	6.2%
Spending, Professional	-5.8%	12.0%	-0.4%	5.2%
Spending, Retail Prescription Drug	4.0%	3.9%	10.5%	12.6%
Prices, Inpatient	4.5%	5.7%	7.6%	3.1%
Prices, Outpatient	0.7%	-12.6%	13.4%	9.6%
Prices, Professional	1.5%	-0.1%	6.8%	6.7%
Prices, Retail Prescription Drug	3.2%	5.1%	12.4%	15.7%
Utilization, Inpatient	-8.1%	-0.9%	-9.1%	1.1%
Utilization, Outpatient	-5.6%	29.4%	-9.7%	-3.1%
Utilization, Professional	-7.2%	12.1%	-6.7%	-1.5%
Utilization, Retail Prescription Drug	0.8%	-1.1%	-1.7%	-2.7%

Source: Health Economics Program analysis data from the Minnesota All Payer Claims Database, Extract 27.

Minnesota Department of Health  
Health Economics Program  
PO Box 64975  
St. Paul, MN 55164-0975  
651-201-4520  
[health.hep@state.mn.us](mailto:health.hep@state.mn.us)  
[www.health.state.mn.us/health/economics](http://www.health.state.mn.us/health/economics)

*To obtain this information in a different format, call: 651-201-4520.*

---

## Notes and References

<sup>1</sup> The MN APCD is a state repository of de-identified health care enrollment and adjudicated claims data administered by the Minnesota Department of Health. See: Health Economics Program, Minnesota Department of Health (2025). Minnesota All Payer Claims Database. Available at: [Minnesota All Payer Claims Database \(https://www.health.state.mn.us/data/apcd/\)](https://www.health.state.mn.us/data/apcd/). Retrieved September 8, 2025.

<sup>2</sup> The MN APCD contains data for roughly 40% of commercially insured Minnesotans largely representing fully-insured products where an insurance carrier, not an employer, carries the insurance risk.

<sup>3</sup> Claims for retail prescription drugs include prescriptions written by a provider and filled at a pharmacy. They do not include drugs administered by providers or over the counter medications. The prices of retail prescription drugs are recorded in MN APCD claims data before manufacturer rebates are applied, should any be available.