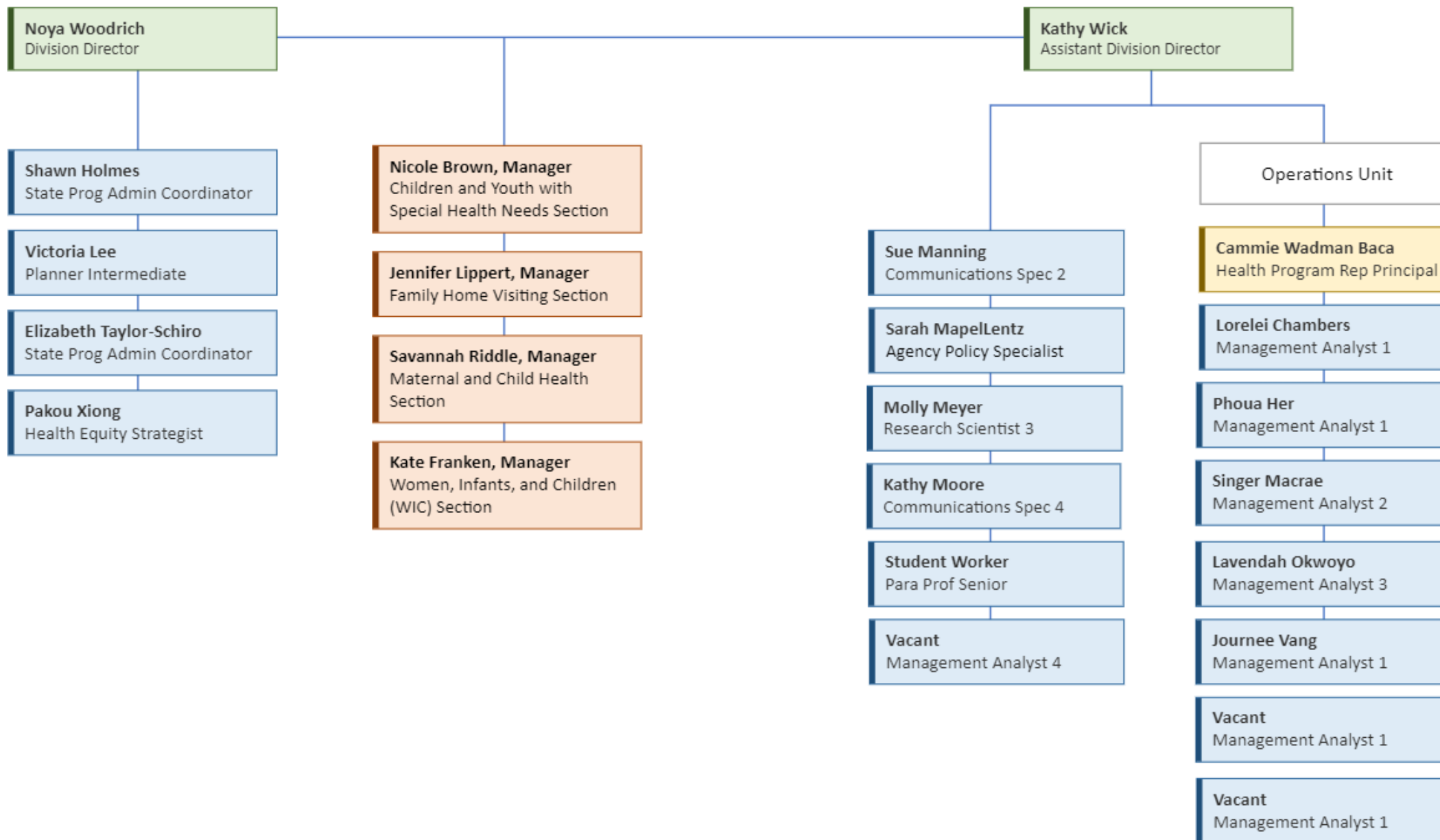
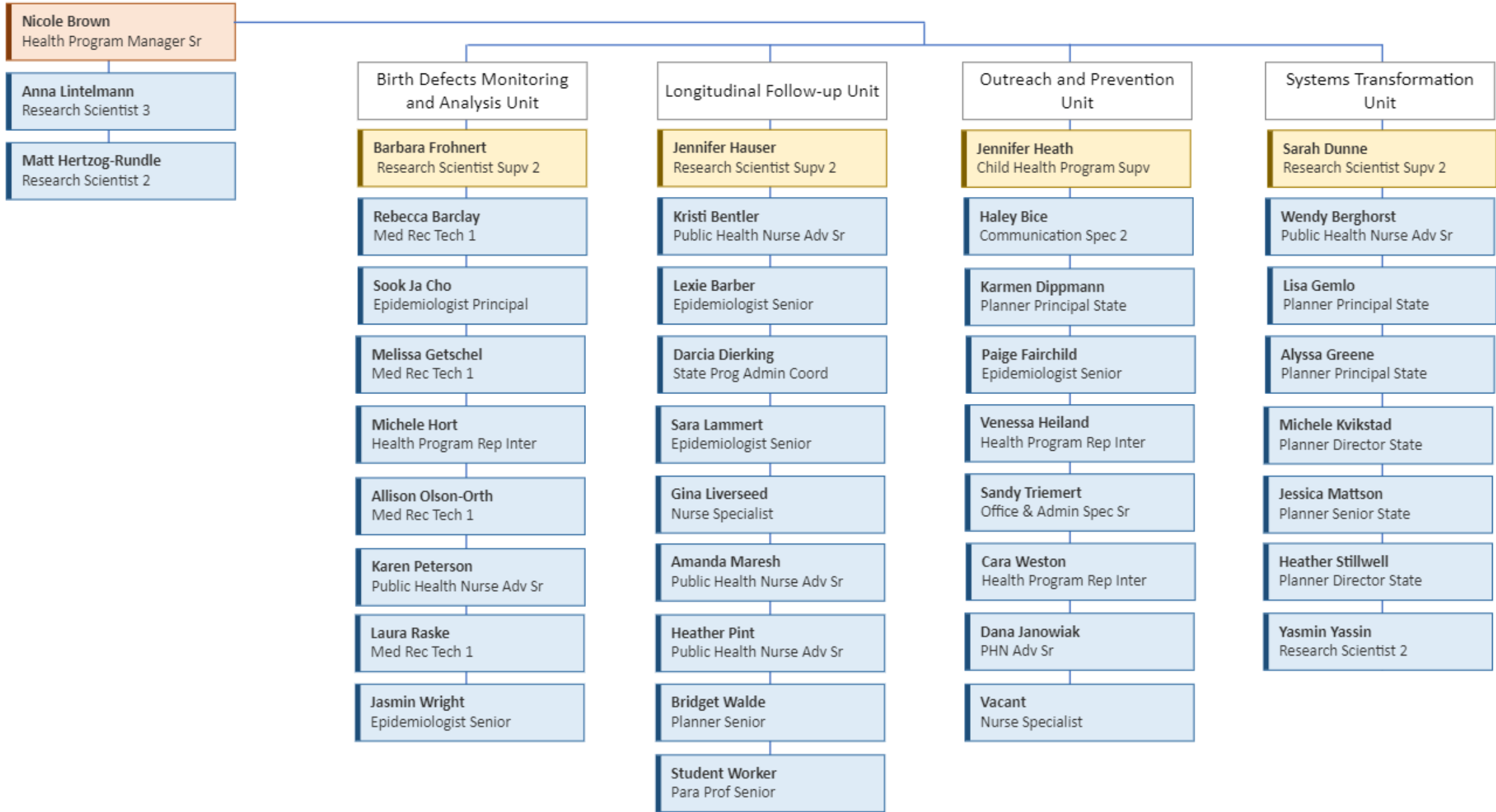




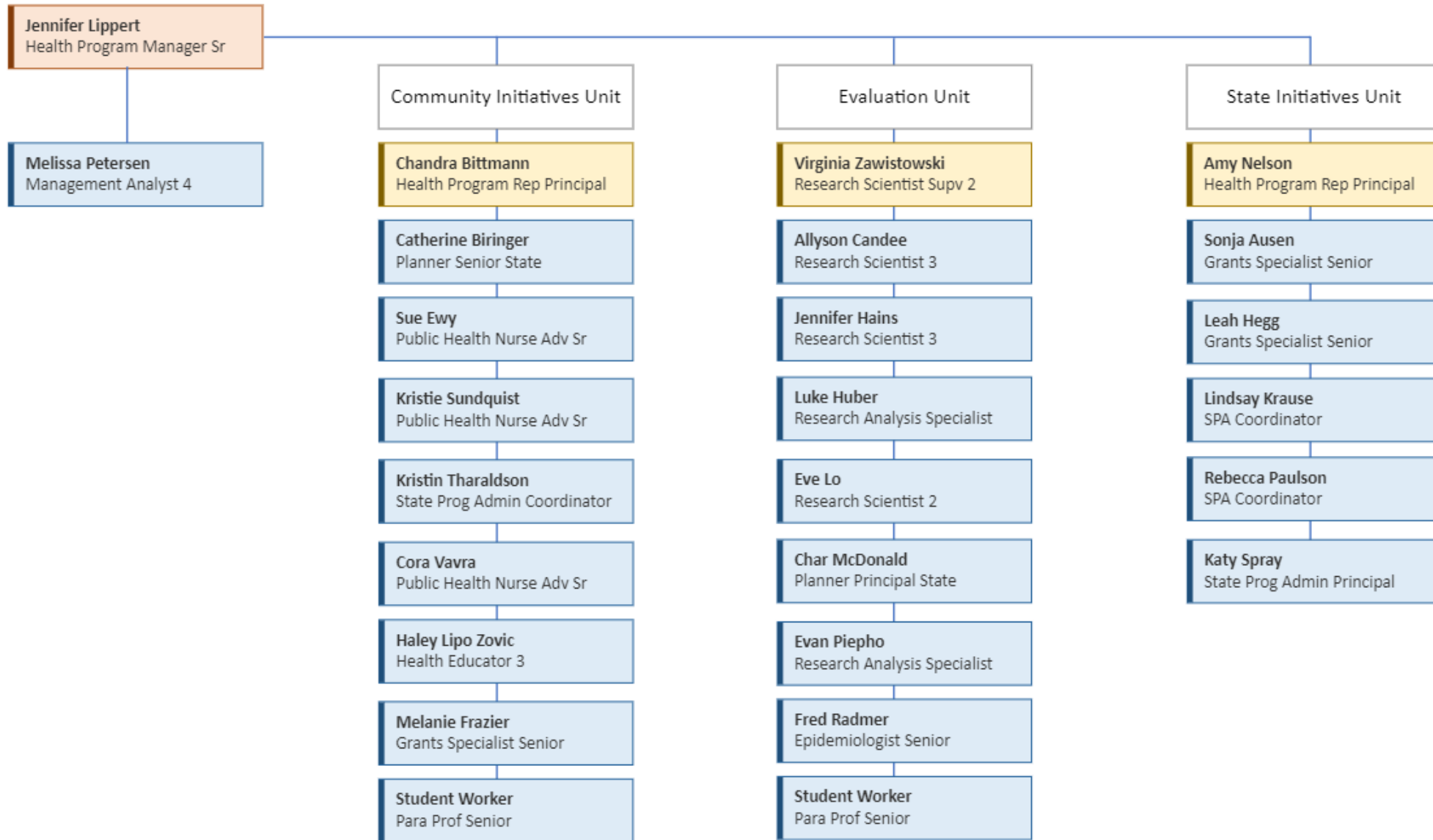
# Child and Family Health Division Organizational Chart



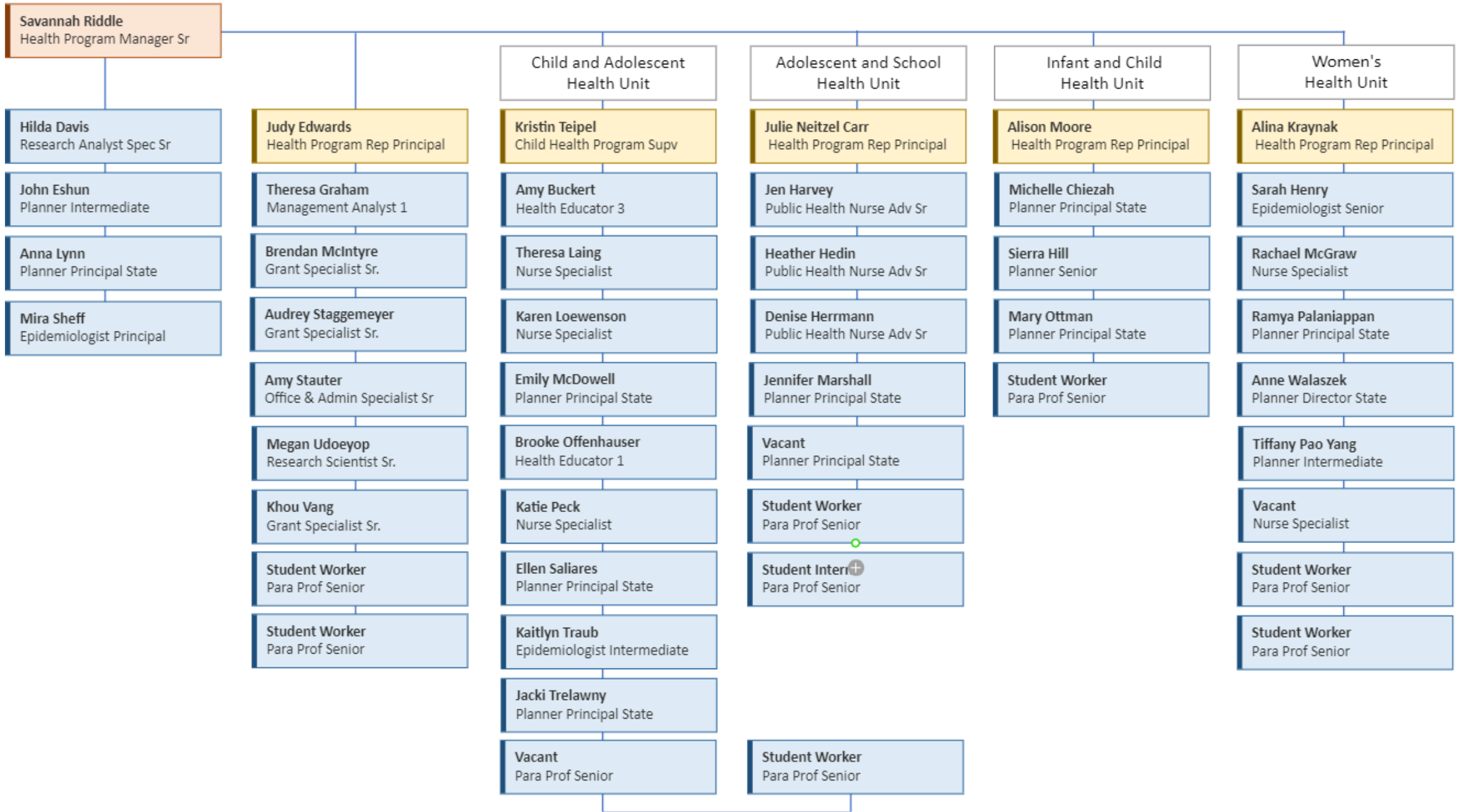
### Children and Youth with Special Health Needs Section



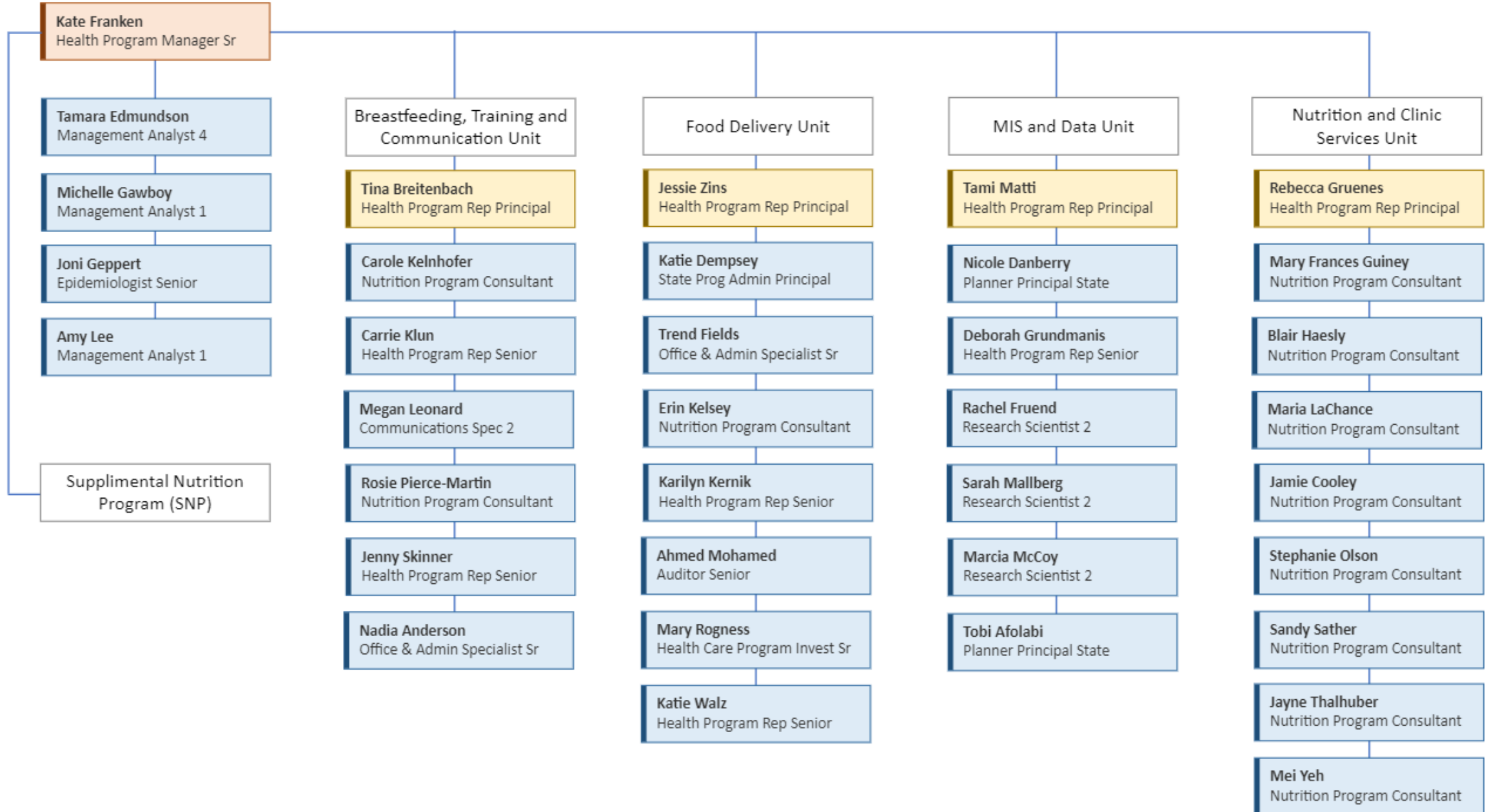
### Family Home Visiting Section



### Maternal and Child Health Section



### Women, Infant and Children (WIC) Section



## Child and Family Health Division Organizational Chart

APRIL 2024

This is the text version of the Division organizational chart for the Child & Family Health Division of the Minnesota Department of Health.

### Director's office

Noya Woodrich is the Division Director. Reporting directly to the Division Director are, Shawn Holmes, State Program Admin Coordinator, Victoria Lee, Planner Intermediate, Elizabeth Taylor-Schiro, State Program Admin Coordinator and Pakou Xiong, Health Equity Strategist. Nicole Brown, Children and Youth with Special Health Needs Section Manager, Jennifer Lippert, Family Home Visiting Section Manager, Savannah Riddle, Maternal and Child Health Section Manager, and Kate Franken, Women, Infant and Children Section Manager. Kathy Wick, Assistant Division Director. Reporting directly to the Assistant Division Director are Sue Manning, Communication Spec 2, Sarah Mapellentz, Agency Policy Specialist, Molly Meyer, Research Scientist 3, Kathy Moore, Communication Spec 4, Student Worker, Para Prof Senior, Vacant, Management Analyst 4, and Cammie Wadman Baca, Operations Unit Supervisor (Health Program Rep Principal), who supervises Lorelei Chambers, Management Analyst 1, Phoua Her, Management Analyst 1, Singer Macrae, Management Analyst 2, Lavendah Okwoyo, Management Analyst 3, Journee Vang, Management Analyst 1, Vacant, Management Analyst 1, and Vacant, Management Analyst 1.

### Children and Youth with Special Health Needs (CYSHN) section

Nicole Brown is the CYSHN Section Manager. Reporting directly to the Section Manager are Anna Lintelmann, Research Scientist 3, Matt Hertzog-Rundle, Research Scientist 2-, and four-unit supervisors listed below.

- Birth Defects Monitoring and Analysis Unit, Barbara Frohnert, Supervisor. Reporting to the Unit Supervisor is Rebecca Barclay, Med Red Tech 1, Sook Ja Cho, Epidemiologist Principal, Melissa Getschel, Med Rec Tech 1, Michele Hort, Health Program Rep Intermediate, Allison Olson-Orth, Med Rec Tech 1, Karen Peterson, Public Health Nurse Adv Senior, Laura Raske, Med Rec Tech 1, and Jasmin Wright, Epidemiologist Senior.
- Longitudinal Follow-up Unit, Jennifer Hauser, Supervisor. Reporting to the Unit Supervisor is Kristi Bentler, Public Health Nurse Adv Senior, Lexie Barber, Epidemiologist Senior, Darcia Dierking, State Prog Admin Coordinator, Gina Liverseed, Nurse Specialist, Amanda Maresh, Public Health Nurse Adv Senior, Health Pint, Public Health Nurse Adv Senior, Bridge Walde, Planner Senior, Sara Lammert, Epidemiologist Senior, and Student Worker, Para Prof Senior.
- Outreach and Prevention Unit, Vacant, Jennifer Heath, Child Health Program Supervisor. Reporting to the Unit Supervisor is Haley Bice, Communication Specialist 2, Karmen Dippmann, Planner Principal State, Paige Fairchild, Epidemiologist Senior, Venessa Heiland, Health Program Rep Intermediate, Sandy Triemert, Office & Admin Spec Senior, Cara

## CHILD AND FAMILY HEALTH ORGANIZATIONAL CHART

Weston, Health Program Rep Intermediate, Dana Janowiak, PHN Adv Senior, and Vacant, Nurse Specialist.

- Systems Transformation Unit, Sarah Dunne, Supervisor. Reporting to the Unit Supervisor is Wendy Berghorst, Public Health Nurse Adv Senior, Lisa Gemlo, Planner Principal State, Alyssa Greene, Planner Principal State, Michele Kvikstad, Planner Director State, Jessica Mattson, Planner Principal State, Heather Stillwell, Planner Director State, and Yasmin Yassin, Research Scientist 2.

### Family Home Visiting (FHV) section

Jennifer Lippert is the FHV Section Manager. Reporting directly to the Section Manager is Melissa Petersen, Management Analyst 4, and three-Unit Supervisors listed below.

- Community Initiatives Unit, Chandra Bittmann, Supervisor. Reporting to the Unit Supervisor is Catherine Biringer, Planner Senior State, Sue Ewy, Public Health Nurse Adv Senior, Kristie Sundquist, Public Health Nurse Adv Senior, Kristin Tharaldson, State Prog Admin Coordinator, Cora Vavra, Public Health Nurse Adv Sr, Haley Lipo Zovic, Health Educator 3, Melanie Frazier, Grants Specialist Senior, and Student Worker, Para Prof Sr.
- Evaluation Unit, Virginia Zawistowski, Supervisor. Reporting to the Unit Supervisor is Allyson Candee, Research Scientist 3, Jennifer Hains, Research Scientist 3, Luke Huber, Research Analysis Specialist, Eve Lo, Research Scientist 2, Char McDonald, Planner Principal State, Evan Piepho, Research Analysis Specialist, Fred Radmer, Epidemiologist Senior, and Student Worker, Para Prof Sr.
- State Initiatives Unit, Amy Nelson, Supervisor. Reporting to the Unit Supervisor is Sonja Ausen, Grants Specialist Senior, Leah Hegg, Grants Specialist Senior, Lindsay Krause, SPA Coordinator, Rebecca Paulson, SPA Coordinator, and Katy Spray, State Prog Admin Principal.

### Maternal and Child Health (MCH) section

Savannah Riddle is the MCH Section Manager. Reporting directly to the Section Manager is John Eshun, Planner Intermediate, Anna Lynn, Planner Principal State, Mira Sheff, Epidemiologist Principal, Vacant, Research Analyst Spec Senior, Judy Edwards, Health Program Rep Principal/Supervisor, and three-Unit Supervisors listed below.

- Judy Edwards, MCH Supervisor. Reporting to the MCH Supervisor is Theresa Graham, Management Analyst 1, Brendan McIntyre, Grant Specialist Sr., Audrey Staggemeyer, Grant Specialist Sr., Amy Stauter, Office & Admin Spec Senior, Megan Udoeyop, Research Scientist Sr., Khou Vant, Grant Specialist Sr., and Student Worker, Para Prof Senior.
- Adolescent and School Health Unit, Julie Neitzel Carr, Supervisor. Reporting to Unit Supervisor is Jen Harvey, Public Health Nurse Adv Senior, Heather Hedin, Public Health Nurse Adv Senior, Denise Herrmann, Public Health Nurse Adv Senior, Jennifer Marshall, Planner Principal State, Vacant, Planner Principal State, Student Worker, Para Prof Senior and Student Intern, Para Prof Senior.
- Child and Adolescent Health Unit, Kristin Teipel, Supervisor. Reporting to Unit Supervisor is Amy Buckert, Health Educator 3, Teresa Laing, Nurse Specialist, Karen Loewenson, Nurse Specialist, Emily McDowell, Planner Principal State, Brooke Offenhauser, Health Educator 1,

## CHILD AND FAMILY HEALTH ORGANIZATIONAL CHART

Katie Peck, Nurse Specialist, Ellen Saliars, Planner Principal State, Kaitlyn Traub, Epidemiologist Principal, Jacki Trelawny, Planner Principle State, Vacant, Para Prof Senior, and Student Worker, Para Prof Senior.

- Infant and Child Health Unit, Alison Moore, Supervisor. Reporting to Unit Supervisor is Michelle Chiezah, Planner Principal State, Sierra Hill Planner Senior, Mary Ottman, Planner Principal State, and Student Worker, Para Prof Senior.
- Women's Health Unit, Alina Kraynak, Supervisor. Reporting to Unit Supervisor is, Rachael McGraw, Nurse Specialist, Anne Walaszek, Planner Director State, Tiffany Pao Yang, Planner Intermediate, Ramya Palaniappan, Planner Principal State, and Sarah Henry, Epidemiologist Senior, Student Worker, Para Prof Senior, and Student Worker, Para Prof Senior.

### Women, Infant and Children (WIC) section

Kate Franken is the WIC Section Manager. Reporting directly to the Section Manager is the Supplemental Nutrition Program (SNP) Unit staff. Tamara Edmundson, Management Analyst 4, Joni Geppert, Epidemiologist Senior, Michelle Gawboy, Management Analyst 1, and Amy Lee, Management Analyst 1, and four-Unit Supervisors listed below.

- Breastfeeding, Training and Communication Unit, Tina Breitenbach, Supervisor. Reporting to the Unit Supervisor is Carole Kelnhofer, Nutrition Program Consultant, Carrie Klun, Health Program Rep Senior, Megan Leonard, Communication Spec 2, Rosie Pierce-Martin, Nutrition Program Consultant, Jenny Skinner, Health Program Rep Senior, and Nadia Anderson, Office & Admin Specialist Senior.
- Food Delivery Unit, Jessie Zins, Supervisor. Reporting to the Unit Supervisor is Katie Dempsey, State Prog Admin Principal, Trend Fields, Office & Admin Specialist Senior, Erin Kelsey, Nutrition Program Consultant, Karilyn Kernik, Health Program Rep Senior, Ahmed Mohamed, Auditor Senior, Mary Rogness, Health Care Program Invest Senior, and Katie Walz, Health Program Rep Senior.
- MIS and Data Unit, Tami Matti, Supervisor. Reporting to the Unit Supervisor is Deborah Grundmanis, Health Program Rep Senior, Rachel Freund, Research Scientist 2, Sarah Mallberg, Research Scientist 2, Marcia McCoy, Research Scientist 2, and Nicole Danberry, Planner Principle State, Tobi Afolabi, Planner Principal State.
- Nutrition and Clinic Services Unit, Rebecca Gruenes, Supervisor. Reporting to the Unit Supervisor are eight Nutrition Program Consultants, Mary Frances Guiney, Blair Haesly, Maria LaChance, Jamie Cooley, Stephanie Olson, Sandy Sather, Jayne Thalhuber, and Mei Yeh.

Minnesota Department of Health  
Child & Family Health  
625 Robert St. N.  
PO Box 64975  
St. Paul, MN 55164-0975  
651-201-3589



CHILD AND FAMILY HEALTH ORGANIZATIONAL CHART

[health.cfhcommunications@state.mn.us](mailto:health.cfhcommunications@state.mn.us)

[www.health.state.mn.us](http://www.health.state.mn.us)